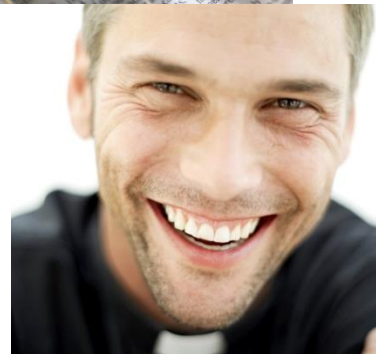
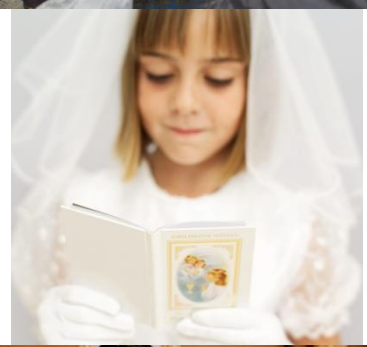


# Characteristics of a Stewardship Parish

ICSC Annual Conference  
October 3, 2016



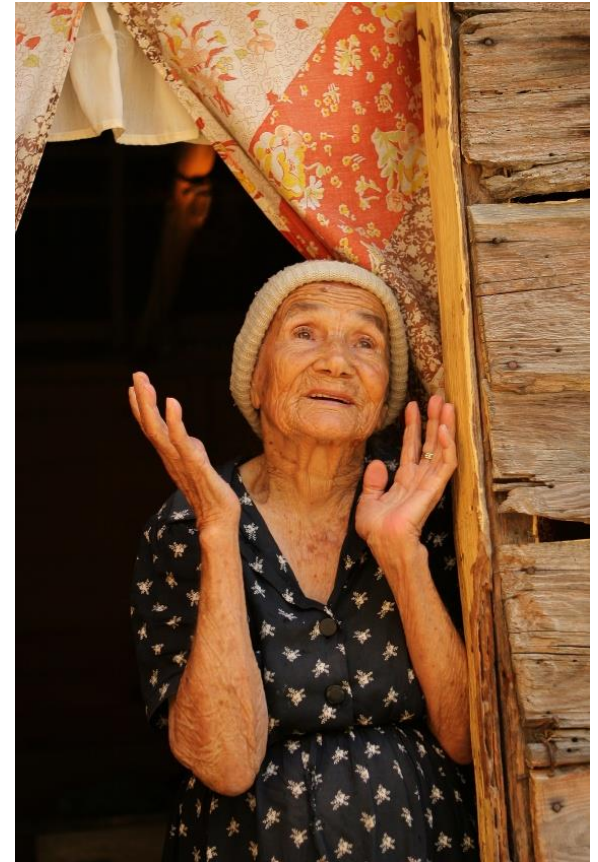
# Overview

- Gratitude
- Spirituality
- Commitment of Leadership
- Personal Witness
- Hospitality/Evangelization/Outreach
- Recognizing, Recruiting and Training Gifts of Time and Talent
- Communication and Education
- Stewardship of Treasure
- Accountability
- Resources



# Gratitude

- Present in all aspects of parish life
- Present in everyone, certainly leadership
- Impossible to be grumpy if you're grateful



# Spirituality

- Parish missions
- Eucharistic adoration
- Adult faith formation
- Small faith sharing groups
- Sacramental prep
- School and/or children and youth
- Prayers of thanksgiving







# Commitment of Leadership

- Collaborative
- Plan, measure, evaluate, adjust
- Ongoing education
- Networking
- Always thanking
- Mission statement
- Annual plan (SMART)
- Annual staff reviews
- Stewardship council
- Studied Pastoral letter
- Staff retreats



**"Take a Pulse" Parish Stewardship Review**

Please circle the number that is closest to where your parish is for each task:  
1 – nothing has been/will be done, 2 - plans made, but not yet implemented, 3 - in progress of implementation, 4 - in place for less than 1 year, and 5 - fully in place for 1 or more years and making measurable progress.

**Plan**  
**Measure**  
**Evaluate**  
**Adjust**  
[www.catholicstewardship.com](http://www.catholicstewardship.com)  
Resources and Publications  
Pastoral and Strategic  
Planning  
  
Also available on the ICSC  
app under my workshop  
behind the Monday PM button

<u>1. Prayer (Spirituality/Gratitude)</u>	Low	High		
- Implement Eucharistic Adoration at some level	1 2 3	4 5		
- Include stewardship themes in the Prayers of the Faithful (gratitude, service)	1 2 3	4 5		
- Install a "Book of Blessings" in church for people to write why they are grateful	1 2 3	4 5		
- Provide witness talks/reflections periodically by parishioners who are <u>stewards</u> of Christ's life and love	1 2 3	4 5		
- Give homilies with Stewardship themes regularly emphasized	1 2 3	4 5		
- Ensure uplifting and inspirational music at all Masses	1 2 3	4 5		
- Encourage prayer (provide prayer resources, reciting a stewardship <u>prayer</u> together at Mass, etc.)	1 2 3	4 5		
- Begin and end all parish meetings and functions with prayer	1 2 3	4 5		
- Schedule an annual staff and ministry stewardship retreat, or parish mission	1 2 3	4 5		
- Establish a parish prayer chain in both email and phone format	1 2 3	4 5		
Total Score	_____			

<u>2. Formation (Planning/Education/Communication)</u>	Low	High
- Formed and commissioned a parish stewardship commission/council, not reporting to the Finance Council, and it meets no less than six times annually	1 2 3	4 5
- Establish and follow an annual plan ensuring year-round stewardship activities	1 2 3	4 5

# Personal Witness



- Witness talks
- Testimonials
- Homilies
- Conversations
- Environment
- Ecumenical efforts



# Hospitality/Evangelization/Outreach

- Sporting events
- New parishioner welcome activities
- Accessibility
- Good signage
- Greeters
- Parking lot attendants
- “Cry room” or area
- Activities for children
- Website
- Evangelization pamphlets
- Catholic literature
- Liturgies





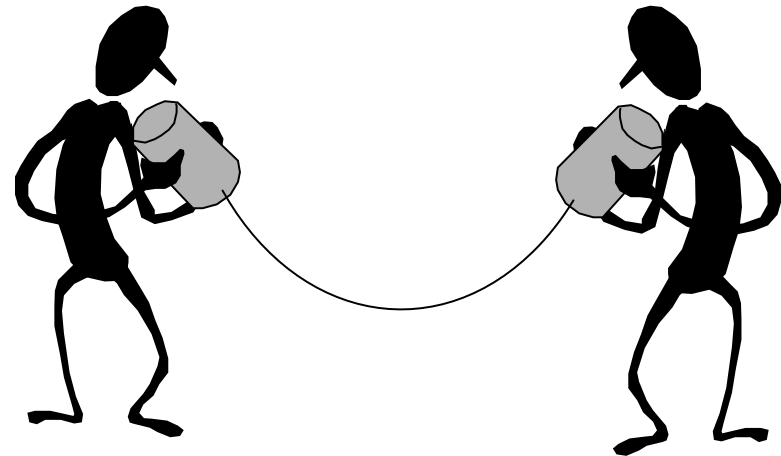
# Gifts of Time and Talent

- Gift discernment
- Vocations
- Annual renewal
- Ministry awareness activities
- Ministry booklets/lists
- FOLLOW UP
- Commissioning
- Thank people



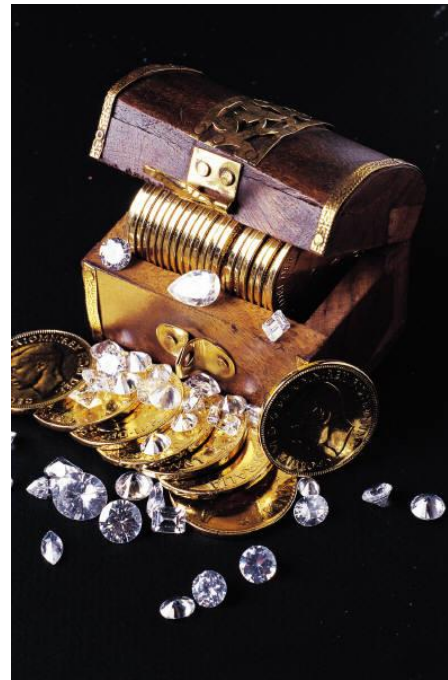
# Communication & Education

- Website
- Newsletter
- Social media
- Follow up
- Gratitude
- Homilies
- Liturgy
- Bulletin inserts
- Literature
- Small group studies
- Email
- Direct mail



# Stewardship of Treasure

- Pledges
- Thank you notes
- Reminders
- Diocesan appeal
- Capital campaign
- Planned giving
- Financial outreach



# Accountability

- Annual report
- Giving statements
- Pledge reminders
- Town hall meeting
- Bulletin note
- Newsletter
- Homilies
- Website





# Good Examples...

St. Francis of Assisi Parish, Wichita, KS -  
<http://www.stfranciswichita.com/>

St. Charles Borromeo, Boardman, OH  
<http://www.stcharlesparishboardman.com/>

St. Anne, Columbus, GA -  
<http://www.stannecsg.com/>

St. Luke the Evangelist, Houston, TX -  
<http://www.stlukesatholic.com/>

St. Michaels, Olympia, WA -  
<http://www.saintmichael.org/>

Blessed Trinity, Ocala, GA -  
<http://www.blessedtrinity.org/>

St. Thomas More, Centennial, CO -  
<http://www.stthomasmore.org/>

St. Pius the Tenth, Greensboro, NC -  
<http://www.stpiusxnc.com/>

Queen of Peace, Gainesville, FL -  
<http://www.queenofpeaceparish.org/>

La Purisma, Orange, CA -  
<http://www.lapurisma.net/>

St Francis of Assisi, Raleigh, NC -  
<http://www.stfrancisraleigh.org/>

St. Mary Magdalen, Altamonte Springs, FL  
<http://www.stmarymagdalen.org/>

Blessed Sacrament, Wichita, KS  
<http://blessedsacramentwichita.com/>

Good Shepherd, Alexandria, VA  
<http://www.gs-cc.org/>



- Gallup Organization, at [www.strengthsfinder.com](http://www.strengthsfinder.com) – Gift discernment
- *Best Practices in Parish Stewardship*, Dr. Charles Zech, Our Sunday Visitor, <https://www.osvparish.com/Shop/Product?ProductCode=T731>
- *Making Stewardship a Way of Life*, Kemberling and Glodava, Our Sunday Visitor, <https://www.osvparish.com/Shop/Product?ProductCode=X861>
- International Catholic Stewardship Council (ICSC) – [www.catholicstewardship.com](http://www.catholicstewardship.com)
- LPi <http://www.4lpi.com/2016/06/27/how-to-create-a-dynamic-parish-facebook-page/>
- Diocese of Rockville Centre in New York [www.stewardshipli.org/main/giftdiscovery.html](http://www.stewardshipli.org/main/giftdiscovery.html)
- Resurrection Parish, Green Bay, WI. Homilies by Auxiliary Bishop Robert Morneau and others at <http://www.gbres.org/about/pastors-page/>
- Visitation of Our Lady Parish, Marrero, Louisiana – Great social media examples on their website at <http://vol.org/>
- Holy Spirit, San Jose, CA – Homilies by Fr. Brendan McGuire at <http://www.holyspiritchurch.org/homilies/>
- Social Media Guidelines from US Bishops at <http://www.usccb.org/about/communications/social-media-guidelines.cfm>



# Questions? Idea Sharing



Cảm ơn  
CẢM ƠN



Julie Kenny  
Director of Member Services  
ICSC Office: 800-352-3452  
Email: [jkenny@catholicstewardship.org](mailto:jkenny@catholicstewardship.org)

Director of Development Operations  
Diocese of Fort Wayne-South Bend  
Office: (260) 969-9148  
Cell: (260) 417-1115  
Email: [jkenny@diocesefwsb.org](mailto:jkenny@diocesefwsb.org)  
LinkedIn: <http://www.linkedin.com/in/juliekenny>